

SCG
International



ZMARTBUILD>WALL BY NXTBLOC

FUTURE MADE POSSIBLE

From Homes to Industries -
One Wall, Endless Benefits!



A BLEND OF TWO CONSTRUCTION PIONEERS

Siam Cement Bigbloc Construction Technologies Private Limited

ZMARTBUILD WALL By NXTBLOC, a joint venture between SCG International & BIGBLOC Construction Limited, brings a new era of world-class walling solutions by carrying forward our parent companies' proud legacies.



SCG Group from Thailand carries over 110 years of expertise in delivering end-to-end cement and construction solutions around the world. They continuously innovate to offer sustainable services.

With a strong vision, SCG brings in cutting-edge technologies to elevate India's construction sector. With innovations such as Drone Solutions, 3D Printing, Ultra-High Performance Concrete, Building Information Modelling (BIM) and more, they continue to reshape the Indian construction sector.

With innovation and customer-centricity at heart, they change the landscape by creating complex structures with ease, reducing waste, and promoting a more sustainable & greener environment.



As a fellow pioneer in sustainable building solutions, BIGBLOC from India, played a pivotal role in the creation of the ZMARTBUILD WALL By NXTBLOC.

BIGBLOC Construction Limited, since 2009, has been dedicated to advancing construction and infrastructure by providing superior building materials with a blend of strength and lightweight, creating a unique mix. Their unwavering commitment to green building solutions has established them as leaders in the industry.

By perfectly balancing expertise, technology, and vision, they build a better, more eco-friendly future of construction at every step.

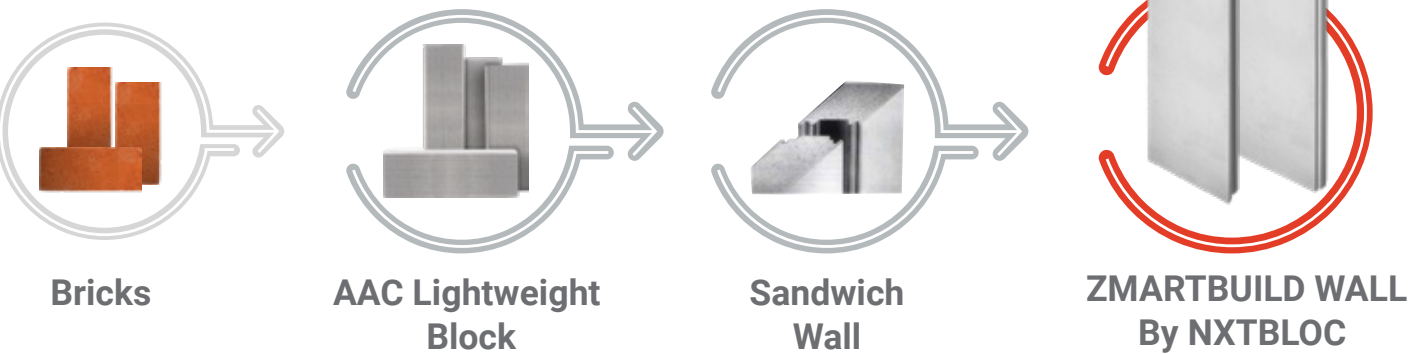


With a blend of innovation and sustainability, ZMARTBUILD WALL By NXTBLOC sets its sights on a tomorrow filled with endless possibilities, to shape a future that is brighter, eco-friendly, and suitable for all.

IT'S ABOUT TIME

ZMARTBUILD WALL By NXTBLOC: a next-generation steel-reinforced AAC Wall answers the need of the hour. It provides faster installation, reduced labour, and superior precision. Its lightweight yet durable structure featuring a built-in tongue-and-groove system makes it ideal for internal and external non-load-bearing walls.

Because outdated walling solutions like bricks, blocks, hollow core panels and sandwich panels are history. It's about time to build smarter, faster, stronger, and greener with ZMARTBUILD WALL By NXTBLOC.

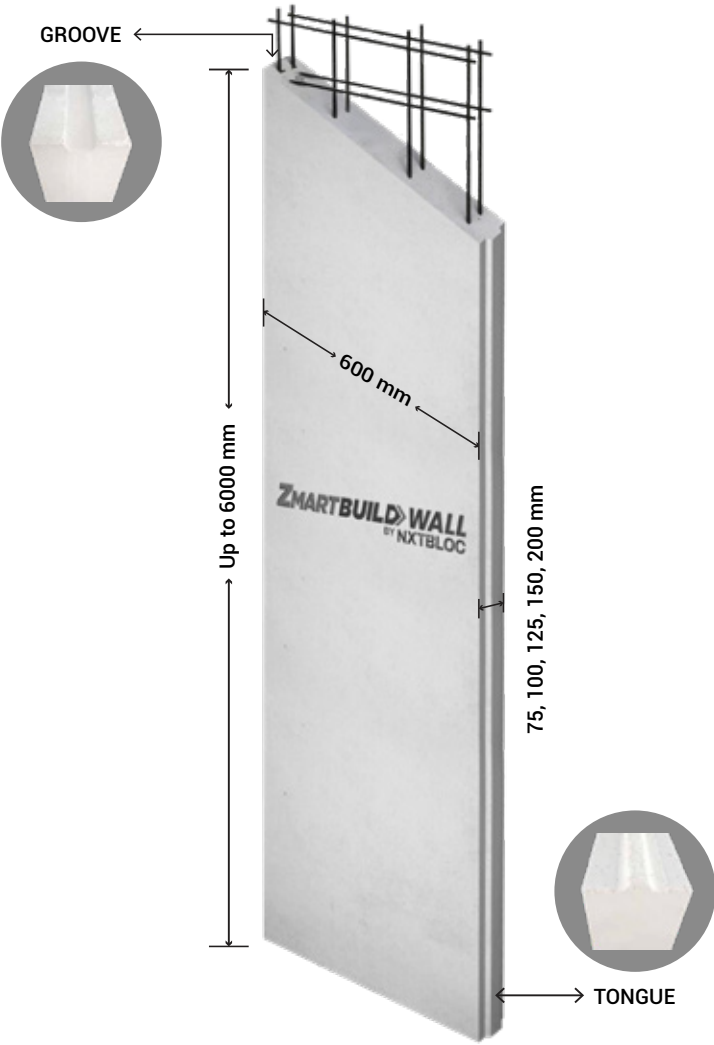


Product Certification

<p>Fire Resistance</p> <p>FERL, IIT Gandhinagar - BS 476 Part 20 & 22:1987 75 mm wall: 2 hours 100-200 mm wall: 4 hours</p>	<p>Sound Insulation</p> <p>ARAI - ASTM E 413 75 mm wall: 41 dB 100 mm wall: 43 dB</p>	<p>Quality Certification</p> <p>ISO 9001:2015 (Certified by QRO)</p>	<p>Green Building Certified (IGBC)</p> <p>Lightweight, strong, thermally efficient, with low water absorption & energy efficiency</p>
<p>Steel Mesh Integration (IS 1608-1)</p> <p>Anti-corrosive ST-50 steel mesh (4 mm, tensile strength >500 MPa)</p>	<p>Water Absorption & Shrinkage (CCRT Laboratories)</p> <p>24-hour absorption: 66.67 g/dm² (NEP 14306)</p>	<p>Compressive Strength & Thermal Conductivity (CCRT Laboratories)</p> <p>4 N/mm² (IS 6441-Part 5-1972) & < 0.16 W/mK (ASTM C177-79)</p>	

Certified Performance for Engineering Trust

PRODUCT ADVANTAGES



Increased Carpet Area:
Slim & sturdy walls take up less space



Faster Installation:
4x faster project completion than AAC Blocks



Steel-reinforced:
For flexural strength, safety & durability



Low Finishing Cost:
Saves total cost by requiring less labour & time



Fire Resistant:
Is non-combustible & resistant for up to 4 hours



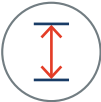
Thermal & Acoustic Insulation:
Excellent at noise reduction & slowing heat transfer



Eco-friendly:
Reduces the consumption of water during installation



Lightweight:
Yet gives superior strength



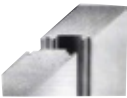




Redefining Heights
Industry's Tallest with the First 6-Meter Height Benchmark

Parameters	Values				
Thickness (mm)	75	100	125	150	200
Width (mm)	600	600	600	600	600
Length (mm)(interval of 100 mm)	Up to 4000	Up to 5000	Up to 6000	Up to 6000	Up to 6000
Number of steel reinforcements	2	2	2	2	2
Tongue and Groove	Yes	Yes	Yes	Yes	Yes

PRODUCT SPECIFICATIONS



Specifications	 Red Brick	 Drywall	 Sandwich Wall	 AAC Block	 ZMARTBUILD WALL By NXTBLOC
Dry Density (kg/m ³)	1950	600 - 800	720-780	550 - 650	550 - 650
Working Density (kg/m ³)	2000	NA	780	600 - 700	650 - 750
Wind Load (kg/m ²)	Up to 150	Up to 160	Up to 120	Up to 160	Up to 180
Compressive Strength (N/mm ²)	>3.5	>4	>4	>4.0	>4.0
Water Absorption (By Volume)	<43%	<90%	<33%	<33%	<33%
Fire Resistance	1.5 hrs (100 mm)	1 hr (100 mm)	2 hrs (75 mm)	4 hrs (100 mm)	2 hrs for 75 mm 4 hrs for 100 mm
Thermal Conductivity (W/m.K)	0.81	0.25	0.21	0.16	<0.16
STC Rating (dB)	50 (230 mm)	40 (100 mm)	35 (100 mm)	38 - 43 (100 mm)	41 - 43 (100 mm)
Reinforced Steel Tensile Strength (N/mm ²)	NA	NA	NA	NA	>500
Weight (kg/m ²)	185 (115 mm)	20	54 (75 mm)	70 (100 mm)	53 for 75 mm 70 for 100 mm

ACCESSORIES



Panel Lifting Tool



Anchor Fastener (Bolt)



Cleaning Brush



Drill Machine



Grinding Machine



Hammer Machine



Hammer



L-clip



Measuring Tape



Mortar Mixer



Nylon Rope



Panel Cutter Machine



Plastering Trowel



Plumb Bob



Right Angle



Spirit Level



Tapping Screw



Wedge



Wrench



Thin Bed Mortar

HOW TO MOVE THE WALL

1



Make sure that there is no obstruction beside the truck

2



Check if the packaging is intact to make sure that it will not fall when lifted

3



Insert soft belts under the pallets at the designed positions

4



Get the wall inside the building by using a hand-lift to lift the walls from the loading area

PRE-INSTALLATION

1



Check the sizes & quantities of the ZMARTBUILD WALL By NXTBLOC

2



Check the construction drawing of the wall layout to install

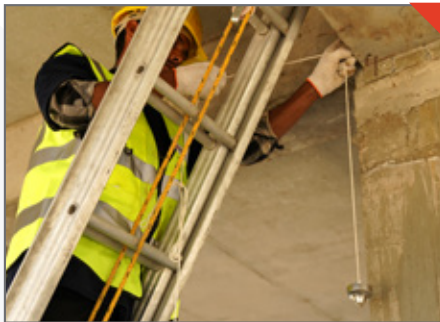
3



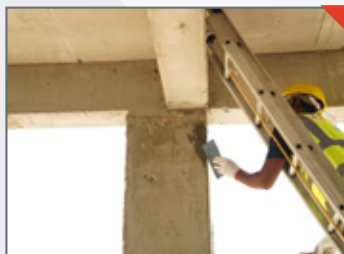
Check your tools & equipment

HOW TO INSTALL

- 1** Clean & mark the wall alignment by using chalk tape and move the wall to the marked point



- 2** Mix Thin Bed Mortar and apply it to the structure column



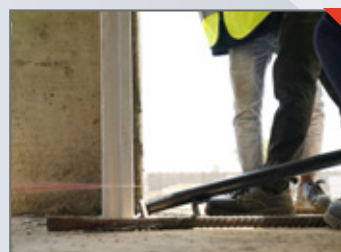
- 3** Lift the wall and push it to attach to the column



- 4** Insert a foam sheet between the floor and the top of the wall



- 5** Use a lever to lift the wall, until the top of the wall reaches the upper floor, and then insert a wooden wedge under the wall



6

Fasten the wall to the floor using a steel angle on the upper and lower sides of the wall with a dash fastener and steel screws



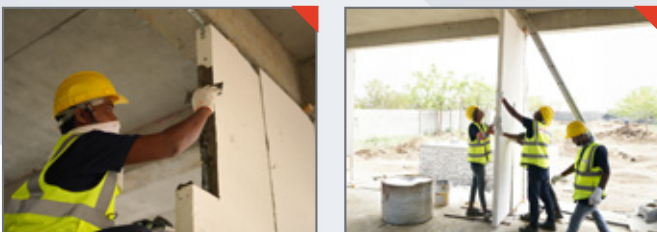
7

Apply Thin Bed Mortar to the side of the first wall, then lift the next wall to attach it, and repeat the steps



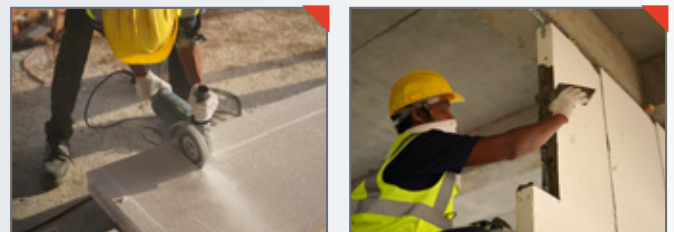
8

Continue to install the walls until the gap can be closed with the end wall



9

Measure the gap and cut the last wall for it to fit in the leftover space and install it



10

Fill the gap under the walls with Sand Cement Mortar



11

Fill the gaps between walls with Thin Bed Mortar, then rub with sandpaper grit 400, after the mortar dries



12

A. Finish the surface with a skim coat, then rub with sandpaper grit 200, for the internal walls
B. Finish the surface with AAC plastering mortar for the exterior walls



13

Your ZMARTBUILD WALL By NXTBLOC installation is complete



PROJECT GALLERY

INDIA



Rajasthali Resort
Kukas, Jaipur, Rajasthan



Centre For Electronic Governance (CEG)
Jaipur, Rajasthan



Vivacity Mall
Jagatpura, Jaipur, Rajasthan



PUNO
Adventure & Trampoline
Jaipur, Rajasthan



V G Collector Residence
Jaipur, Rajasthan

THAILAND



Four Seasons
Private Residences
Bangkok



Siam Paragon
Bangkok



Miami Bangpu
Samut Prakan



Koncept Warehouse
Surin



The Tree Condo
Bangkok

SAFETY FIRST

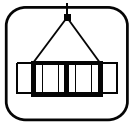
CAUTIONS

To transfer ZMARTBUILD WALL



Move the pallet by using a hand-lift or a forklift and check the packaging before moving

- ✓ The pallet strap is tight
- ✓ Pallets must be in good condition
- ✓ Move one pallet at a time
- ✓ Do not move the pallet on a rough area or areas with a slope higher than 36 degrees as it is a fall-risk



Move the pallet by using a crane and check the packaging before moving

- ✓ The pallet strap is tight
- ✓ Pallets must be in good condition
- ✓ Move one pallet at a time



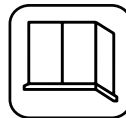
Move the pallet by hand

- ✓ Beware of objects that you could trip on and check if the panels are sturdy
- ✓ Lift the product in the right manner to avoid muscle injuries
- ✓ At least two people are required to lift the wall
- ✓ Handle the product with care to avoid damage and injuries

Installation guidelines



At least two people are required to install the ZMARTBUILD WALL By NXTBLOC. Study and follow the technical installation manual.

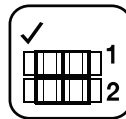


ZMARTBUILD WALL By NXTBLOC is designed & instructed to be used for wall partition only and not as a load-bearing structure.

Storage



Avoid keeping the products outdoors for over 30 days to prevent any damage caused by humidity and weather.



Do not stack more than two packs. Maintain a height of less than 1.7 m.

SAFETY



Wear safety glasses to prevent dust from entering your eyes



Wear a dust mask to prevent inhaling harmful dust and fumes



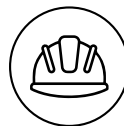
Wear safety work clothes to protect yourself from numerous hazards



Wear work gloves to save your hands from severe cuts



Wear safety shoes to maintain balance and carry materials with ease



Wear a helmet to safeguard your head from potential hazards



Don't rub but rinse your eyes with water if dust enters and get medical attention if irritation persists

SCG International India Pvt. Ltd.

PSP C-14-002-002A, 14th Floor, Emaar
Palm Spring Plaza Golf Course Road,
Gurugram, Haryana 122003, India

Mumbai Office

609, A Wing, Corporate Avenue,
Sonawala Road, Goregaon (E),
Mumbai - 400063, India

Tel (IN): 011-411-33631

Mobile No: (IN) +91 70260 89005

Whatsapp: (IN) +91 70260 89004

Web: www.zmartbuild.com/in

Email: scgindia@scg.com | zmartbuildindia@gmail.com

Ahmedabad Office

B-106, Shilp Corporate Park, Rajpat Rangoli Road,
Near Rajpat Club, S G Highway, Ahmedabad,
Gujarat - 380054, India

Plant Location (Kheda)

Survey No. 234/235/236,
Village - Ramosadi, Kapadvanj,
Dist. Kheda, Gujarat - 387620, India



Scan to know more

SCG
International



ZMARTBUILD WALL
BY NXTBLOC