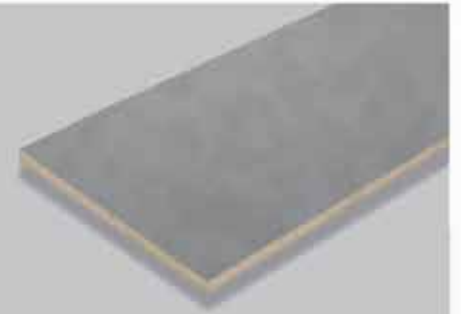


SCG Cementboard



CEMENT BOARD

SCG Cementboard is made by using high pressure to press a mixture of chipped wood particles and portland cement until the desired thickness is reached. Then, pass special process to create a smooth surface and attractive color resembling a bare cement surface.





SCG Cementboard is a product combining the good qualities of cement and wood to yield a material featuring wood-like resilience with cement-like strength and weather resistance all in one.

Each board goes through the production process with special technology. The surface is a combination of portland cement and wood particles thoroughly chopped and ground into powder form. This makes a smooth, detailed, attractive and splinter-free surface. Meanwhile, the middle layer is a mixture of portland cement and wood pieces chopped and sliced into long, thin sheets for more adhesion to the cement and wood. As a result, the board has more strength and higher density.

SCG Cementboard's production process and material usage are environmentally friendly, while being free from asbestos and other harmful ingredients to your health like urea-formaldehyde. Once the production process is finished, each SCG Cementboard is cut to size and tested for quality to assure quality products that are attractive, durable and suitable for both interior and exterior use.



Features

Attractive with colors and patterns resembling bare cement work that's perfect for designs requiring exposed surfaces.

No rust stains or white stains on cement boards.

Smooth surface due to a special process for preventing surface splinters.

Durable and able to bear weight meeting international standards.

Multipurpose for interior walls and floors.



Size, thickness and weight

Standard Size	4' x 8' (Foot)								
Thickness (mm.)	8	10	12	14	15	16	18	20	24
Weight (kg./po.)	33.0	41.4	49.7	57.7	62.8	67.3	75.3	83.6	100.3
Weight (kg./sq.m.)	11.1	13.9	16.7	19.4	21.1	22.6	25.3	28.1	33.7

Standard Size	120 x 240 cm.					
Thickness (mm.)	8	10	12	16	20	24
Weight (kg./po.)	32	40	48	65	81	97
Weight (kg./sq.m.)	11.1	13.9	16.7	22.6	28.1	33.7



Durable



No Delamination



Easy Use and
Quick Installation



Termite
Resistant



Heat
Resistant



Asbestos
Free



Environmentally
Friendly

Technical information

Specific information	Unit	TIS 878-2537	SCG Cementboard (Average value from test)
Density	kg./m ³	1,100-1,300	1,300
Modulus of elasticity (MOE)	N/mm ²	≥ 3,000	5,470
Modulus of rupture (MOR)	N/mm ²	≥ 9	12.7
Tensile strength (perpendicular to surface)	N/mm ²	≥ 0.5	0.6
Moisture content	%	9-15	10.7
Thickness swelling (after 24 hours immersion in water)	%	≤ 2	0.6
Thermal conductivity (K)	W/m ^o c	≤ 0.25	0.1
Other test values			
Water absorption rate (after 24 hours immersion in water)	%		10
Acoustic reduction rating	dB		30-35
pH Measure	pH		12

Uses for different thicknesses of SCG Cementboard

Choosing the suitable thickness for each application										
Use	Thickness (mm.)									
	8	10	12	14	15	16	18	20	24	
Interior wall decoration	●									
Interior wall structure	●	●	●	●	●	●	●	●		
Interior/exterior flooring								●	●	

Special Features

Fire resistance:

- Since SCG Cementboard has a high ratio of cement as a component, it has fire resistant qualities. SCG Cementboard has also passed BS 476 Part 6 and 7.
- The wall system built from SCG Cementboard has passed BS 476 Part 22 test for 1, 2 and 4-hour fire resistant walls.

Soundproof:

- The SCG Cementboard soundproof wall system has passed STC 41, 50 and 55.
- Since the SCG Cementboard has high density and efficiently reduces ambient sounds with the following sound transmission index:

Table of Frame Spacing for Maximum Load

Product	Thickness (mm.)	Frame Spacing (cm.)	Building Type	Load Compliance Municipal Laws (kg./sq.m.)
SCG Cementboard	20-24	61 x 122	Residence	150
	20-24	61 x 122	Condominium, hotel, dormitory	200
	20-24	61 x 122	Office, bank	250
	20	61 x 61	Commercial, university, school	300
	24	61 x 122		
	20	40.6 x 40.6	Department store, theater, auditorium, restaurant	400
	24	61 x 122		
	20	40.6 x 40.6	Warehouse, museum, bleacher, industrial factory, publishing house	500

Note: • The load in the table is calculated from installation where the load is equally distributed and does not include concentrated force, impact load or vibrations.

- The framing that supports the boards must be strong. The entire piece must be installed and the framing must support the piece on all four sides.



Wall Installation

Distance for anchoring the boards (mm.)	
Distance from the anchor point to the corner of the board	75
Distance from the anchor point to the edge of the board	30
Distance between the anchor points at the edge of the board	20
Distance between the anchor points at the center of the board	30

Type of work	Choosing the right framing for the type of work	
	Galvanized steel	Steel
Interior walls	●	
Floor		●

• Recommended framing:

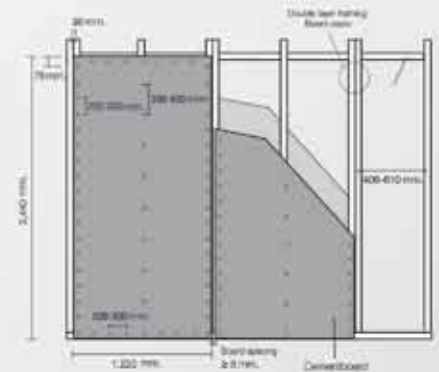
• Galvanized framing C74, U76 SCG.

• Steel framing:

- C-shaped steel (light gauge) size 75 x 45 x 15 mm., 100 x 50 x 20 mm. or 150 x 50 x 20 mm. with 2.3 mm. thickness or thicker.
- Steel size 100 x 50 or 150 x 50 mm. with 2.3 mm. thickness or thicker.

Interior walls/Partition walls

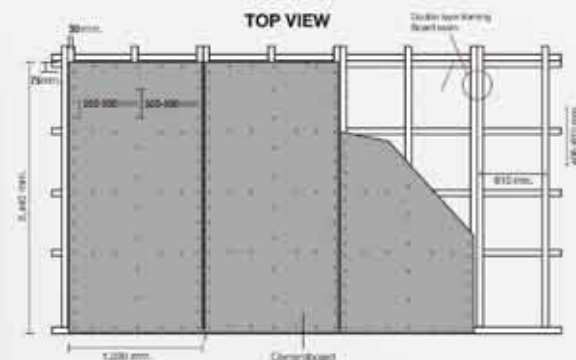
Board thickness	Framing	Installation
8-20 mm.	<ul style="list-style-type: none"> • SCG Smartboard galvanized framing (C-74, U-76) • Steel framing C 75 x 45 with 2.3 mm. thickness or thicker • Frame spacing 61 x 244 cm. 	Install the boards using one-way anchors on an adjustable frame with SCG 23 mm. needle point screws for galvanized frame or SCG self-drilling wing screw 28.5 or 32 mm. for steel frame. Seal the exposed nail heads. Paint with contact primer before painting with the desired paint system with the method recommended by the paint manufacturer.



Floor Installation

Interior floors with exposed surface

Board thickness	Framing	Installation
20-24 mm.	<ul style="list-style-type: none"> • Steel framing C100 x 50 x 20 x 23 x 3.2 mm. • Space main joists every 40.6 or 61 cm. • Secondary joists 122 cm. 	Install framing and adjust cement board. Then, coat with clear epoxy or clear polyurethane.

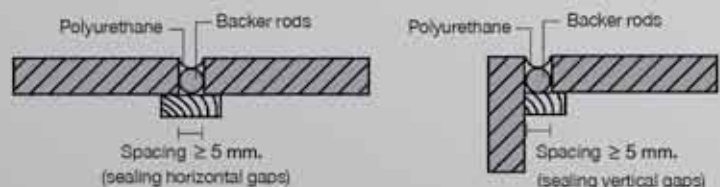


Finishing

1. Sealing jointing gaps:

1. Clean and fill the gaps with backer rods.
2. Neatly press the backer rods into the gaps.
3. Tape the floorboards on both sides of the gaps.
4. Apply SCG polyurethane sealant on the gaps.
5. Level off the SCG polyurethane sealant with a grout float.
6. After approximately 24 hours, peel off the tape.

*** Note: T, U and L-shaped stainless edging or plastic edging can be used to conceal the grout lines.



2. Sealing exposed nail heads:

Equipment: Acrylic filler and powdered color (for exposed surfaces)

1. Mix the sealing material at the ratio recommended by the manufacturer. Try to match the color of the floorboards.
2. Cover the exposed nail heads with sealing material for holes that are drilled 1-2 mm. larger than the edge of the nail heads.
3. Seal the nail heads with the sealing material and neatly level off the surface with a grout float.
4. Sand the surface with 180-240 grit sandpaper until smooth.
5. Clean the surrounding area with a brush.

*** Note: the above method for sealing exposed nail heads is suitable for exposed surface work. However, if the cementboards are to be painted, change the method to using glue, cement and powdered color instead.

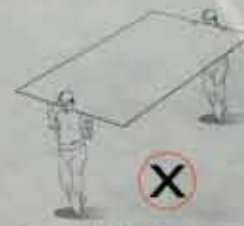
3. Surface Painting and Coating

Usage	Paint system	Clear coating for exposed surfaces
Interior walls	Interior acrylic paint with primer coat applied before	Lacquer spray, clear polyurethane
Interior floors	Polyurethane paint system, wood stain color system	Clear polyurethane

Product Storage and Transportation



Support with 1.5 x 3 inches wood props every 60 cm. or with pallets.



Warning:

- Do not use this product for building structures or anything other than its intended purpose. This product must be installed according to the installation manual and only standard equipment from the manufacturer's company should be used.
- Do not ingest.
- Do not inhale.
- Never use this product in wet and humid areas.

Recommended safe work method:

- SCG Cementboard contains cement. Cutting, grinding, drilling or sanding this product may spread dust. If a large amount of this dust is inhaled or inhaled over a long period of time, it may cause harm to the respiratory system and body.
- This product should be cut, ground, drilled or sanded in a well-ventilated place and cutting, grinding, drilling or sanding equipment that causes a large amount of dust should be avoided.
- Do not work in stormy weather or when the ground is wet.
- Wear standard personal safety equipment such as a dust mask, safety goggles, shirt, gloves and shoes.
- In order to avoid potential hazards, do not allow anyone without standard personal safety equipment or anyone who is not involved in the work to come near the work area.
- This product must be lifted or moved carefully. Do not lift with your back. Do not twist or turn while lifting and avoid working continually for long periods of time to avoid injuries and soreness.
- Anytime lifting is required, use the method of touching, gripping the product firmly and using the leg muscles to lift.
- To clean the work area after cutting, grinding, drilling or sanding the product, use a vacuum machine then completely seal the bag containing the dust or use water to clean. Do not sweep as it may spread dust.
- Separate and gather leftover pieces from the installation, reparation or demolition of this product with caution then properly dispose of them as approved by law.
- Wash with clean water after cutting, grinding, drilling or sanding the product.

The installation manual is constantly adjusted. Designers, construction site superintendents and installers must be certain that the installation manual used is the most recently issued. If there is any uncertainty, check at www.scgbuildingmaterials.com.

Model: SCG-C001-5812 | *The price of a board shown in the image may differ from the actual product due to the printing process. The company reserves the right to change dimensions at any time without previous notice.

All content, design, and layout are Copyright © 2015, SCG Cement Building Materials. All Rights Reserved. Reproduction in whole or part in any form or medium without specific written permission is prohibited.



Available at leading construction stores.
 SCG Contact Center +662-586-2222
 Email: contact@scg.co.th, www.scgbuildingmaterials.com