

SCG Cement Wood MEGA FLOOR

Big scales facilitating installation

For both exterior and interior uses

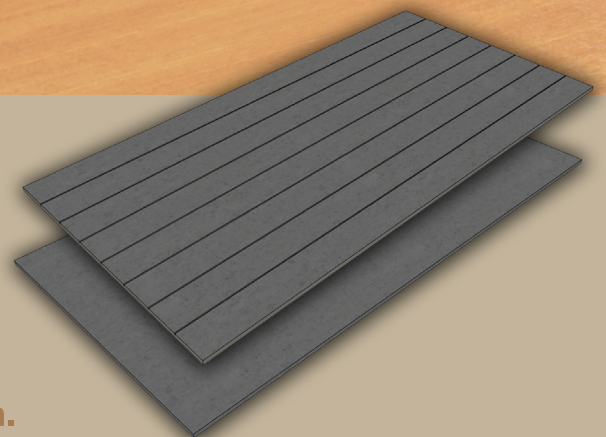
Less frames in installation (60 cm. for distance)

MEGA FLOOR

Bigger scales 1200 x 2400 mm.

The board is made of portland cement and wood, which is a very flexible material, through high pression.

These make the board strong, flexible, durable and anti-termite.



(MEGA FLOOR)



Anti-termite



Nonflammable



Money and
time saving



Good for respiration



Durable against
extreme weather



Easy for installation

Size / Thickness / Weight

Types	Wood-like surface with Cement color (Grain)	Wood-like surface with Cement color (V Groove Grain 6")
Size : (Wide x Long x Thick)	1200 x 2400 x 20 mm. 1200 x 2400 x 24 mm.	1200 x 2400 x 20 mm. 1200 x 2400 x 24 mm.
Weight per pieces - thickness 20 mm. - thickness 24 mm.	81 kg. 97 kg.	81 kg. 97 kg.
Pieces per pallet - thickness 20 mm. - thickness 24 mm.	24 pcs. 20 pcs.	24 pcs. 20 pcs.

Recommended equipment and chemicals



Screw with 45 mm. long



Screw driver



1800-watt Circular saw
(5,800 rounds per second)



Circular saw blade
(more than 40 sawtooth)



Grout Adhesive Poly-U seal
to put between each piece



Beger Acrylic Filler F-200
To fix nail heads
and gap between pieces



Primer for
Fiber cement SCG



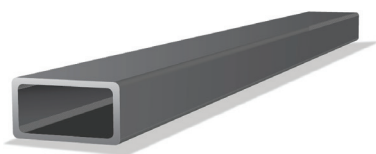
Paint for Flooring
Fibercement SCG
(transparent acrylic paint)

Recommendations for wood-like surface varnishing

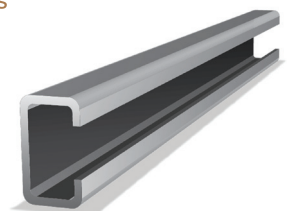
1. Put white/gray Primer layers on surface (1 - 2 times)
2. Put some transparent acrylic paint for flooring materials (2 - 3 layers) with normal brush, letting wood-like lines be on surface

Metal frames in installation

Recommended structural steels are below : Structural steel for beams

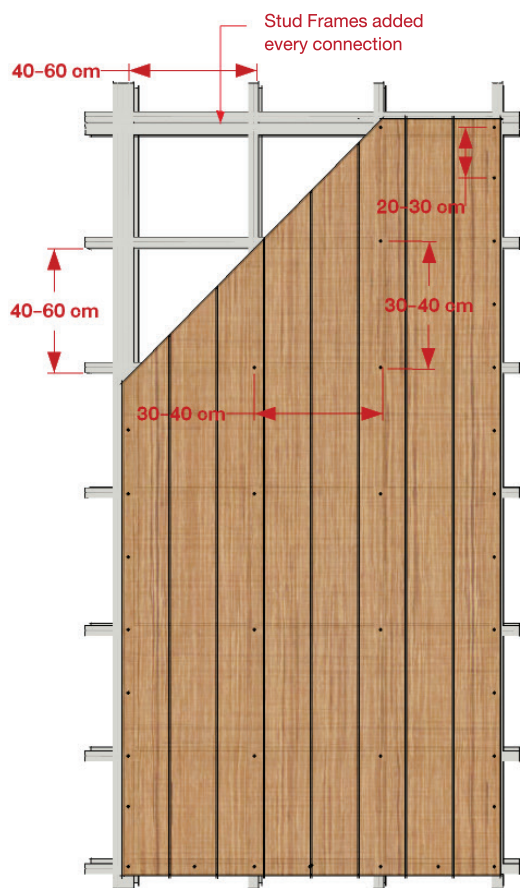


Box-like form with 100 x 50 mm.
and 2.3 - 3.2 mm. thick



Structural steel for joist C-shaped form with
100 x 50 x 20 mm. and 2.3-3.2 mm. thick

Installation on metal structure



Thickness : 20 – 24 mm.

Frames : Put each Mega Floor board on frames with enough support for screws (as the example)

There must be frames supporting edges of each board.

Installation : For interior installation, distance between boards is 3 –5 mm. and for exterior one, 5 – 10 mm. Polyurethane adhesive must be filled up. Distance between each screw on the edges is 20 – 30 cm. and in the middle 30 – 40 cm. but the distance screws-angle must be 7.5 cm, and screw-edge 3 cm.

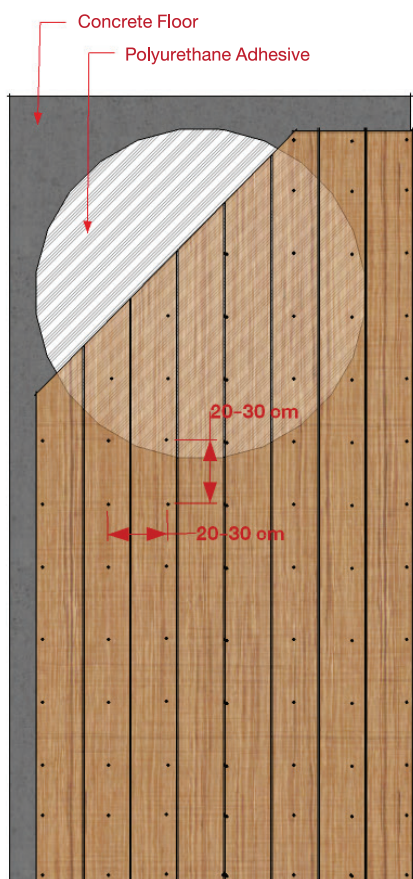
: Hide screw head with acrylic filler

: Clean with damp towel

: Varnish with primer color (1 layer)

: Paint with 100 % Flooring Fiber cement transparent acrylic paint for 2 – 3 layers to get timber-like surface

Installation on Concrete Floor



Thickness : 20 – 24 mm.

Installation : Clean carefully the surface (neither dust nor greasiness)

: Stick the board against concrete with cement adhesive.

Layer should be 6 – 8 mm. thick.

: Put adhesive behind the board (6 – 8 mm thick).

: Put board on cement by adding 38mm screws in every 60 mm. distance. Let the adhesive dry (around 24 hours).

: Give space between boards: 3-5 mm for interior installation and 5-10 mm for exterior one. Fill the space with

Polyurethane grout glue

: Hide screw head with acrylic filler

: Varnish with foundation paint (1 layer)

: Paint with 100 % transparent acrylics for 2 – 3 layers to get timber-like surface

Recommendations for Storage

- Boards should be stored in shelter against humidity or well covered when they are kept outdoor. And the location should be accessible to forklift
- Supportive stands should be properly installed before putting boards on, in order to prevent board deformation. Each stand should be distanced at 60 cm. and there should be 4 supportive stands for 240 cm.

Recommendations for Transportation

- Boards need to be laid flat and be effectively protected during transportation by waterproof covering
- Board should be handle horizontally by 3 - 4 persons

